

Machinery

INSPECTRA

Fabric Inspection Machine

Width 180 / 220 / 320

ES-272-10-180-100

ES-272-10-220-100

ES-272-10-320-250

> Roll to Roll form Inspection

> Ergonomic, user friendly Design

> Edge control, Digital Length Measure system

> Available in different width and roll weight



INSPECTRA is an ergonomically designed Fabric Inspection Machine, The synchronized driven system allows tension-free operation for any type of fabrics. It comes with Industrial Panel Windows Touch Pc and 4ps (4point system) software package as optional for real-time data collection of the Fabric Rolls such as defects, width, length, and weight(optional).

The machine is modern and ergonomically designed for easy use for different heights of the operator (inspection panel height and angle adjustable) thanks to its simplified 4ps Inspection software interface, anyone can easily learn and adopt for error-free data collection.

TECHNICAL SPECIFICATIONS:

- Maximum speed 150 m / min
- Average speed 40 m / min
- Maximum width 180 - 220 - 320cm
- Maximum capacity 100 kg
- Maximum roll diameter up to 50 cm
- Voltage 230 v, 1 ph 50 Hz

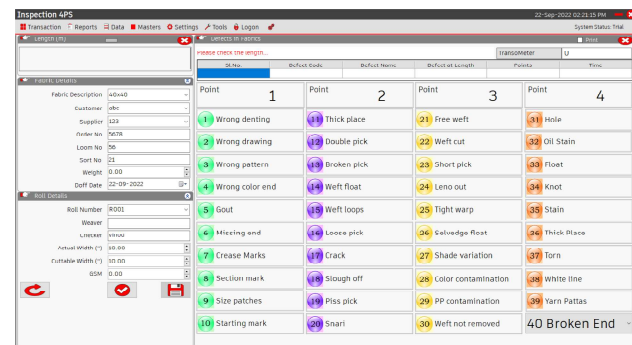
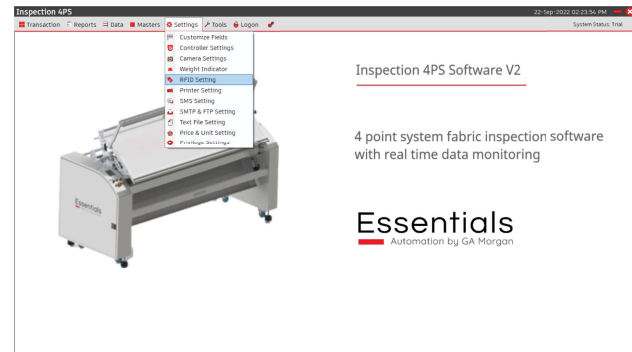
HARDWARE SPECIFICATIONS:

- Fabric length measurement using digital encoder
- Fabric detection with photo sensor device
- Edge control system
- Adjustable Speed
- Width detection (optional)
- Weight detection (optional)
- Report generation (optional)

FEATURES:

- Most ergonomic and compact design
- Easy to handle
- Synchronized production process
- Forward and Reverse of Fabrics
- Top and Bottom LED illumination
- Improved spreading productivity and quality
- Edge Control for proper roll winding

4PS : 4 Point system (optional)



Product made in India

GA MORGAN DYNAMICS
FASHION | TECHNOLOGY | SOLUTIONS

1421 B Block, 13th Main, Sahakar Nagar
Bengaluru 560092 Cell : 9731533004
info@gamorgan.in | www.gamorgan.in